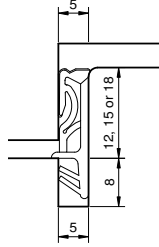
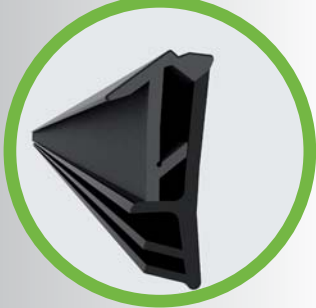


SP 124-12
TPS, 180m spool

SP 124-15
TPS, 150m spool

SP 124-18
TPS, 150m spool

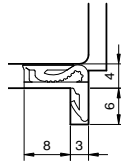
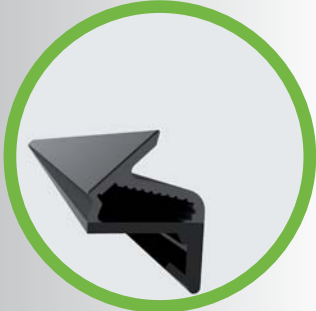


SP 7012
TPS, 180m spool

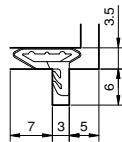
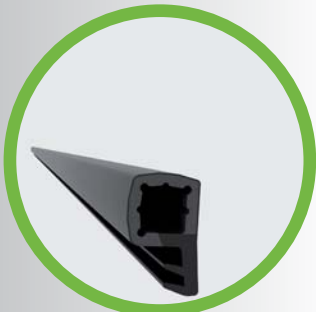
SP 7015
TPS, 150m spool

SP 7018
TPS, 150m spool

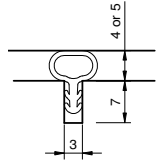
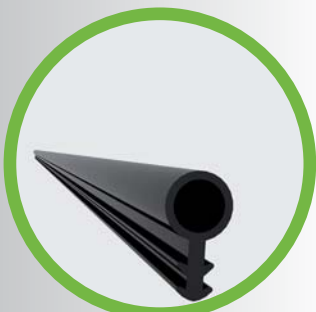
*If you have other groove details
enquire for more information



SP 5717
TPS, 250m spool

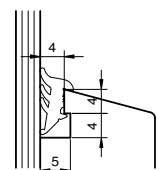


SP 63
TPS, 300m spool



S 0318
TPS, 200m spool

S 0032
TPS, 200m spool



SV 2
TPS, 200m spool

QUALITY

- Good physical and thermal quality
- Good deflection recovery
- Extremely low closing force¹
- Copes with high tolerances
- Temperature range from -40°C to +180°C
- Suitable for smoke proof doors to DIN 18095
- Age, weathering, UV and ozone resistant
- Closed cell foam structure²

USE

- For Timber and Timber-Aluminium clad windows and doors
- Interior and exterior doors
- Suitable for acoustic (40db) and smoke proof windows and doors

¹ Closing force not relevant on SV 2

² Closed Cell Foam on SP range only

